



<http://www.atis.gr.jp/>

**ATIS<sup>®</sup>**

**Association of Technical  
Information Services**

January 31, 2014

## ■ Established in 1981

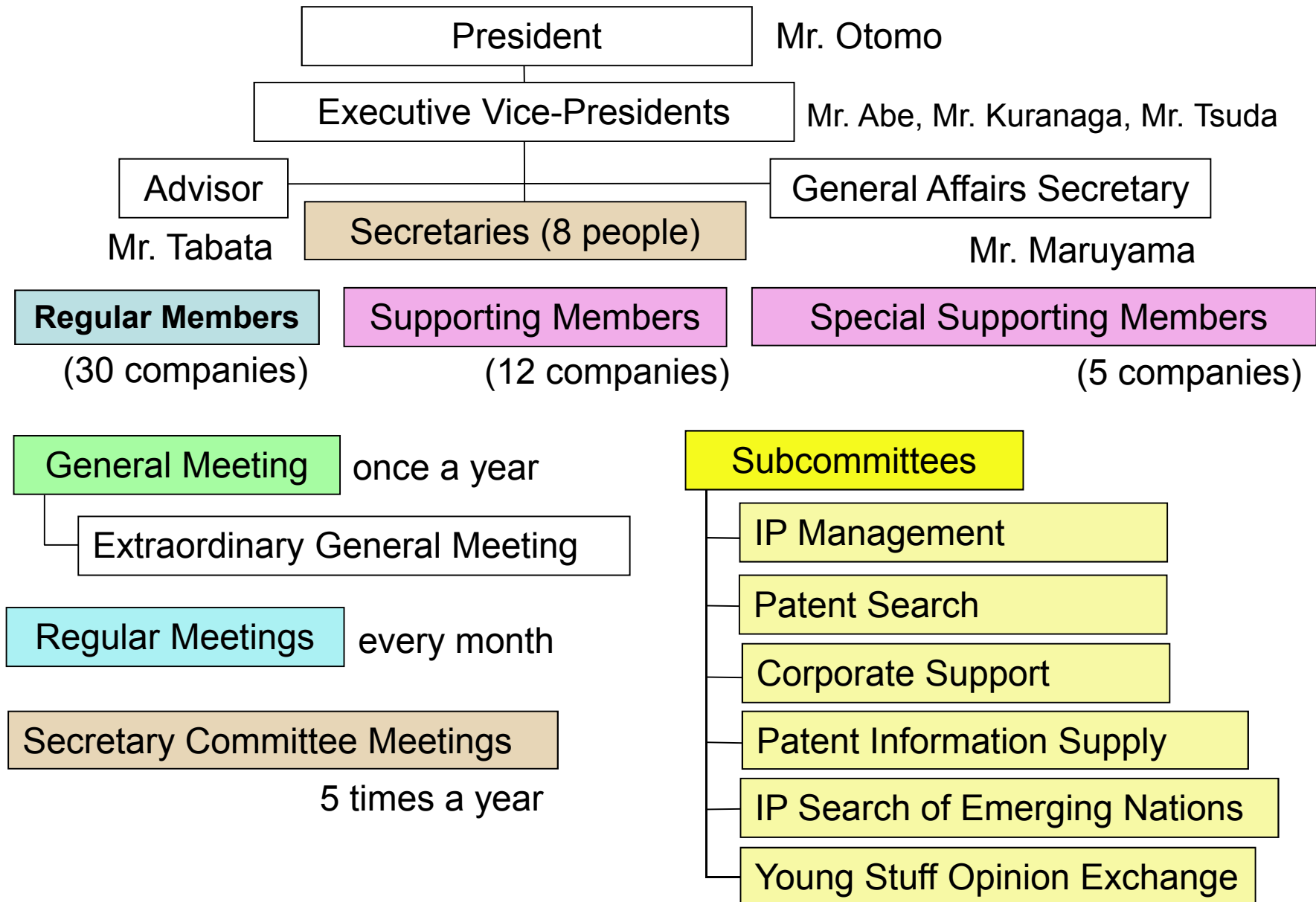
- Starting with 8 companies
- 47 companies as of January, 2014

## ■ Our Mission

1. Contribute to the advancement of information in Japan through various scientific and technical information service activities and investigative research by ATIS members.
2. Advance members' knowledge and skills regarding scientific and technical information services and the promotion of the industry.

# Organization of ATIS

January, 2014



# Membership Qualification Requirements

## Regular Member

- ① A company whose business is in the scientific and technical information service industry.
- ② Parent company is a manufacturer and listed in the first section of the Tokyo Stock Exchange

## Supporting Member

If Condition ② above is not satisfied, a company that publishes and markets a patent or technical information database.

## Special Supporting Member

- ② above parent company who merged regular member company.

# Regular Meetings

( ) number / yr.

1. Management issue presentations by member companies (6)
2. Cross industry association through parent company factory and technical facility visits. (3)
3. Guest lectures from key opinion leaders concerning patents and new, state-of-the-art technologies. (8)
4. Unique or new product presentations by Supporting Members. (2)
5. Subcommittee activity reports. (2)
6. Topical and activity reports by ATIS President (1 1)

# IP Search of Emerging Nations Subcommittee

- Members
  - 7 regular member companies, 1 supporting member company, 1 special supporting member company and 1 ATIS adviser.
- Activity
  - The investigation of emerging nations on; the patent clearance search, the patent data base, the patent retrieval system, the IP institution, the IP right enforcement, the technology transfer, etc.
  - Opinion exchanges with JPO(Japan Patent Office), JETRO(Japan External Trade Organization), etc.